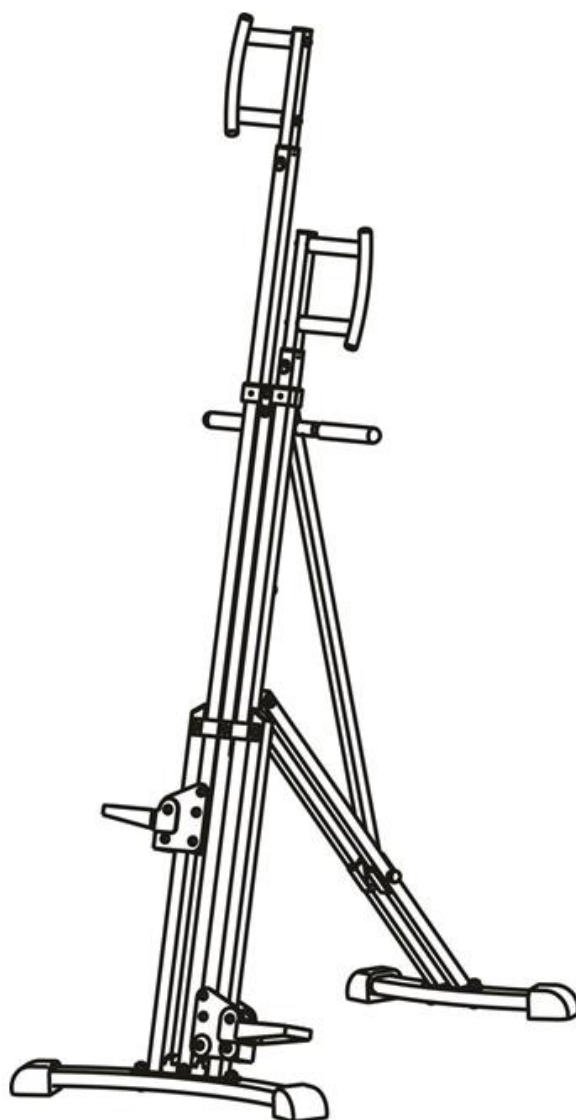




USER MANUAL – EN

IN 14349 Climber Equipment inSPORTline Mesenero



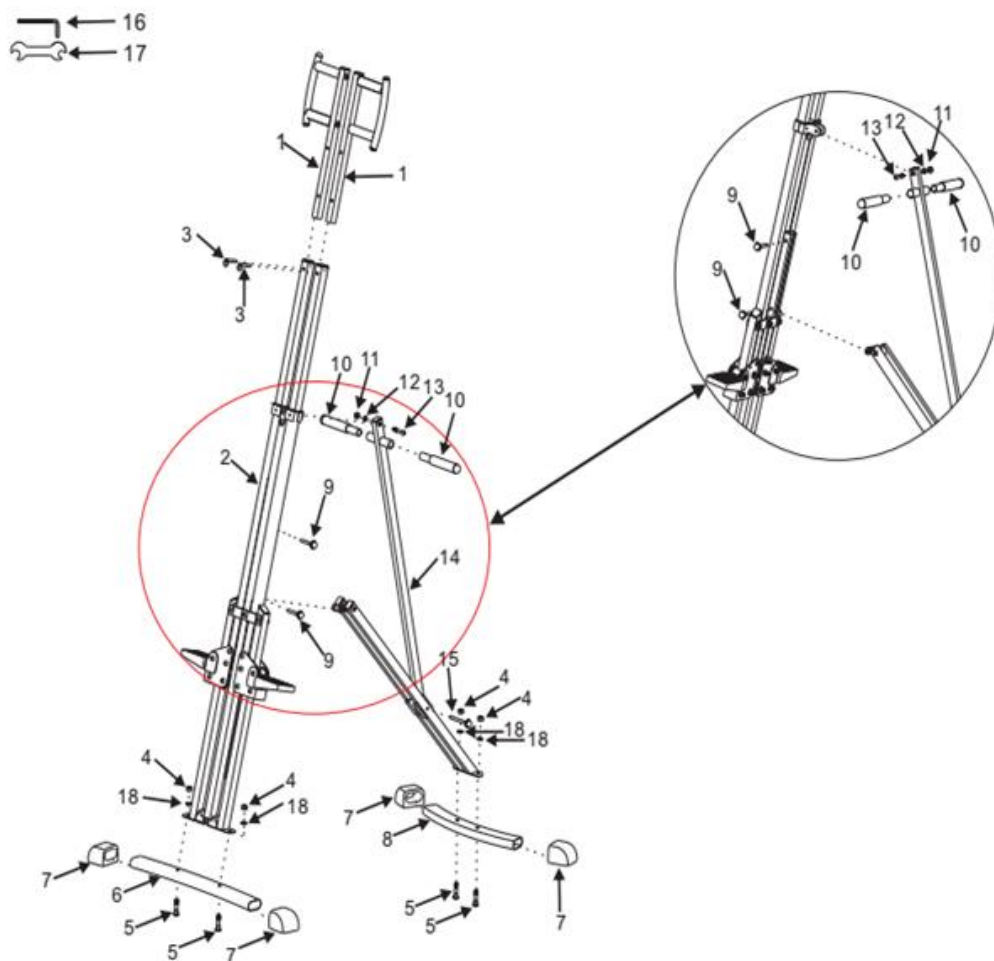
CONTENTS

SAFETY PRECAUTIONS.....	3
EXPLODED DRAWING.....	4
PARTS LIST	4
ASSEMBLY INSTRUCTIONS	5
FOLDING AND UNFOLDING	7
USING	7
TERMS AND CONDITIONS OF WARRANTY, WARRANTY CLAIMS	7

SAFETY PRECAUTIONS

1. Assemble this product only on a flat, level surface to assure its proper function.
2. Clean it regularly. Pay attention, metal parts can go rusty.
3. Consult your health state with a physician before starting any exercises.
4. Don't overstretch your physical possibilities to avoid an injury. If you feel any pain or disease during exercising, stop immediately.
5. Check that all bolts and nuts fit well. Check all parts for wearing to avoid an injury. Damaged or worn parts replace immediately. If you find some sharp edges on this device, don't use it. Also don't use it, if you can hear any unexpected noises from this device.
6. Use it only indoors.
7. No adjustable part has to stand out. It could obstruct user movements.
8. Keep children and pets away from this device. Don't let them near this device without supervision of any adult.
9. Keep your hands, feet and hair away from moving parts. Put your hands only on designated places.
10. Exercise with care to avoid an injury.
11. Use this device only according to this manual. Don't use it before the complete assembling has been finished. If you are not sure, contact the customer service.
12. Put it only on a flat and clear surface. Keep a clearance of min. 0.6 m around this device for safe using.
13. Wear suitable sports clothes before exercising. Don't wear too loose clothes that could be caught. Always wear closed and toed shoes and tighten the laces well.
14. This device is not suitable for people with health problems and complications, with worsened perceptiveness or with any other impairment. Moreover, people, who have not enough of exercising experiences, should not use this device.
15. This device is not suitable for pregnant women.
16. Only one person can use this device at the time.
17. Don't put any sharp matters on or near this device. Pay attention during assembling, not to crush your hands.
18. **Max. weight limit: less than 150 kg (330 lbs).**
19. **Category:** HC (according to EN957 norm) suitable for home using.
20. **WARNING!** Overexertion during training can lead to a serious injury or even death. If you start to feel faint, stop the exercise immediately.

EXPLODED DRAWING



PARTS LIST

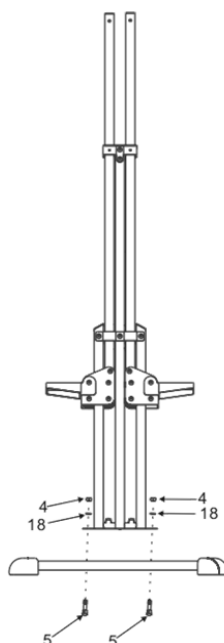
No.	Name	Specification	Quantity
1	Upper arm		2
2	Front main frame		1
3	Pin	Ø7.8*42	2
4	Nut	M10	4
5	Bolt	M10*40	4
6	Front base section		1
7	Foot pad		4
8	Back base section		1
9	Pin	Ø7.8*57	1
10	Lower arm		2
11	Nut	M8	1
12	Washer	Ø16*Ø8*1	1

13	Bolt	M8*35	1
14	Back frame		1
15	Pin	Ø7.8*87	1
16	Wrench 1		1
17	Wrench 2	13 - 17	1
18	Washer	Ø20*Ø10*1.5	4

ASSEMBLY INSTRUCTIONS

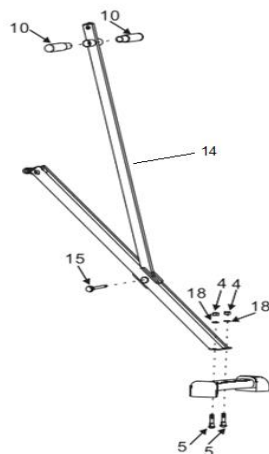
Step 1

Attach the front base section (6) to the front main frame (2). Use bolts M10*40 (5), washers Ø20*Ø10*1.5 (18) and nuts M10 (4). Insert foot pads (7) onto each end of the front and back base section.



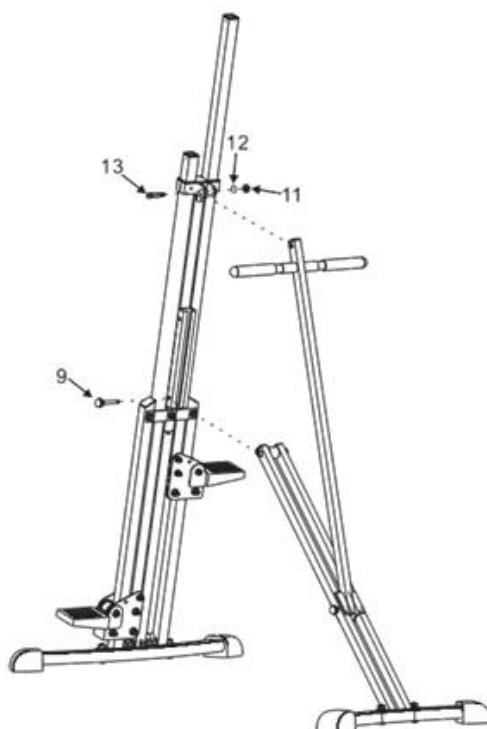
Step 2

Use the pin Ø7.8*87 (15) to attach the back frame (14) as shown. Attach the back base section (8) to the end of the back frame (14). Use bolts M10*40 (5), washers Ø20*Ø10*1.5 (18) and nuts M10 (4). Attach the lower arm (10) near top of the back frame (14).



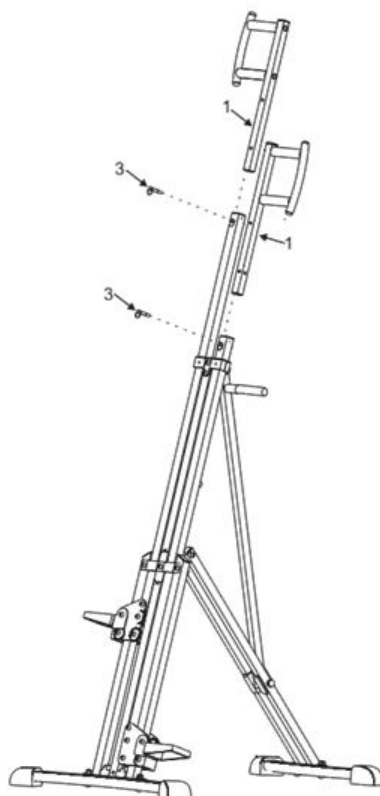
Step 3

Use bolt M8*35 (13), washer Ø16*Ø8*1 (12) and nut M8 (11) to attach the top back frame (14) to the front main frame (2). Use the pin Ø7.8*57 (9) to attach adjustable part of rear frame to the front frame. Use lower hole in unfolded state and upper hole in folded state.

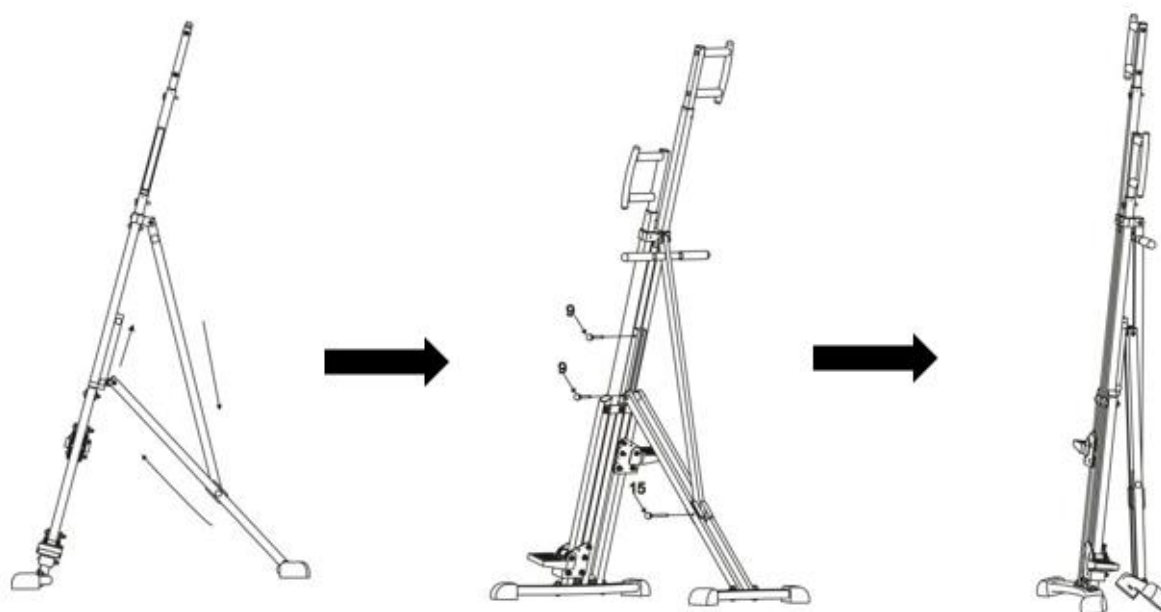


Step 4

Use pins Ø7.8*42 (3) to attach the upper arms (1) to the front main frame (2).



FOLDING AND UNFOLDING



- Draw pin (9) to the lower position to make it ready for exercising.
- Place pin (9) into higher position and pin (15) into lower position to fold and store it.

USING

Using this device, you will practise the same movements like during climbing. You will exercise your upper and lower body parts. This can help you to burn more calories and to reduce your weight. Put your feet onto pedals, so that you could feel strokes of your muscles (buttock and thighs). If you want to exercise your calves put your toes nearer to the pedals. Catch the upper arm firmly and involve your arms, shoulders, chest and back in your training. If you feel a pain in your shoulders, put your hands onto lower arms. Be sure your head is straight and you look ahead. Avoid overstretching of your neck. You can lift your feet higher or increase the frequency to increase intensity of exercising.

TERMS AND CONDITIONS OF WARRANTY, WARRANTY CLAIMS

General Conditions of Warranty and Definition of Terms

All Warranty Conditions stated hereunder determine Warranty Coverage and Warranty Claim Procedure. Conditions of Warranty and Warranty Claims are governed by Act No. 40/1964 Coll. Civil Code, Act No. 513/1991 Coll., Commercial Code, and Act No. 634/1992 Coll., Consumer Protection Act, as amended, also in cases that are not specified by these Warranty rules.

The seller is SEVEN SPORT s.r.o. with its registered office in Borivojova Street 35/878, Prague 13000, Company Registration Number: 26847264, registered in the Trade Register at Regional Court in Prague, Section C, Insert No. 116888.

According to valid legal regulations it depends whether the Buyer is the End Customer or not.

“The Buyer who is the End Customer” or simply the “End Customer” is the legal entity that does not conclude and execute the Contract in order to run or promote his own trade or business activities.

“The Buyer who is not the End Customer” is a Businessman that buys Goods or uses services for the purpose of using the Goods or services for his own business activities. The Buyer conforms to the General Purchase Agreement and business conditions to the extent specified in the Commercial Code.

These Conditions of Warranty and Warranty Claims are an integral part of every Purchase Agreement made between the Seller and the Buyer. All Warranty Conditions are valid and binding, unless

otherwise specified in the Purchase Agreement, in the Amendment to this Contract or in another written agreement.

Warranty Conditions

Warranty Period

The Seller provides the Buyer a 24 months Warranty for Goods Quality, unless otherwise specified in the Certificate of Warranty, Invoice, Bill of Delivery or other documents related to the Goods. The legal warranty period provided to the Consumer is not affected.

By the Warranty for Goods Quality, the Seller guarantees that the delivered Goods shall be, for a certain period of time, suitable for regular or contracted use, and that the Goods shall maintain its regular or contracted features.

The Warranty does not cover defects resulting from (if applicable):

- User's fault, i.e. product damage caused by unqualified repair work, improper assembly, insufficient insertion of seat post into frame, insufficient tightening of pedals and cranks
- Improper maintenance
- Mechanical damages
- Regular use (e.g. wearing out of rubber and plastic parts, moving mechanisms, joints etc.)
- Unavoidable event, natural disaster
- Adjustments made by unqualified person
- Improper maintenance, improper placement, damages caused by low or high temperature, water, inappropriate pressure, shocks, intentional changes in design or construction etc.

Warranty Claim Procedure

The Buyer is obliged to check the Goods delivered by the Seller immediately after taking the responsibility for the Goods and its damages, i.e. immediately after its delivery. The Buyer must check the Goods so that he discovers all the defects that can be discovered by such check.

When making a Warranty Claim the Buyer is obliged, on request of the Seller, to prove the purchase and validity of the claim by the Invoice or Bill of Delivery that includes the product's serial number, or eventually by the documents without the serial number. If the Buyer does not prove the validity of the Warranty Claim by these documents, the Seller has the right to reject the Warranty Claim.

If the Buyer gives notice of a defect that is not covered by the Warranty (e.g. in the case that the Warranty Conditions were not fulfilled or in the case of reporting the defect by mistake etc.), the Seller is eligible to require a compensation for all the costs arising from the repair. The cost shall be calculated according to the valid price list of services and transport costs.

If the Seller finds out (by testing) that the product is not damaged, the Warranty Claim is not accepted. The Seller reserves the right to claim a compensation for costs arising from the false Warranty Claim.

In case the Buyer makes a claim about the Goods that is legally covered by the Warranty provided by the Seller, the Seller shall fix the reported defects by means of repair or by the exchange of the damaged part or product for a new one. Based on the agreement of the Buyer, the Seller has the right to exchange the defected Goods for a fully compatible Goods of the same or better technical characteristics. The Seller is entitled to choose the form of the Warranty Claim Procedures described in this paragraph.

The Seller shall settle the Warranty Claim within 30 days after the delivery of the defective Goods, unless a longer period has been agreed upon. The day when the repaired or exchanged Goods is handed over to the Buyer is considered to be the day of the Warranty Claim settlement. When the Seller is not able to settle the Warranty Claim within the agreed period due to the specific nature of the Goods defect, he and the Buyer shall make an agreement about an alternative solution. In case such agreement is not made, the Seller is obliged to provide the Buyer with a financial compensation in the form of a refund.

**SEVEN SPORT s.r.o.**

Registered Office: Borivojova 35/878, 130 00 Praha 3, Czech Republic
Headquarters: Delnicka 957, 749 01 Vitkov, Czech Republic
Warranty & Service Centre: Cermenska 486, 749 01 Vitkov, Czech Republic
CRN: 26847264
VAT ID: CZ26847264
Phone: +420 556 300 970
E-mail: eshop@insportline.cz
reklamace@insportline.cz
servis@insportline.cz
Web: www.insportline.cz

SK**INSPORTLIN s.r.o.**

Headquarters, Warranty & Service centre: Elektricka 6471, 911 01 Trencin, Slovakia
CRN: 36311723
VAT ID: SK2020177082
Phone: +421(0)326 526 701
E-mail: objednavky@insportline.sk
reklamacie@insportline.sk
servis@insportline.sk
Web: www.insportline.sk

Date of Sale:

Stamp and Signature of Seller: